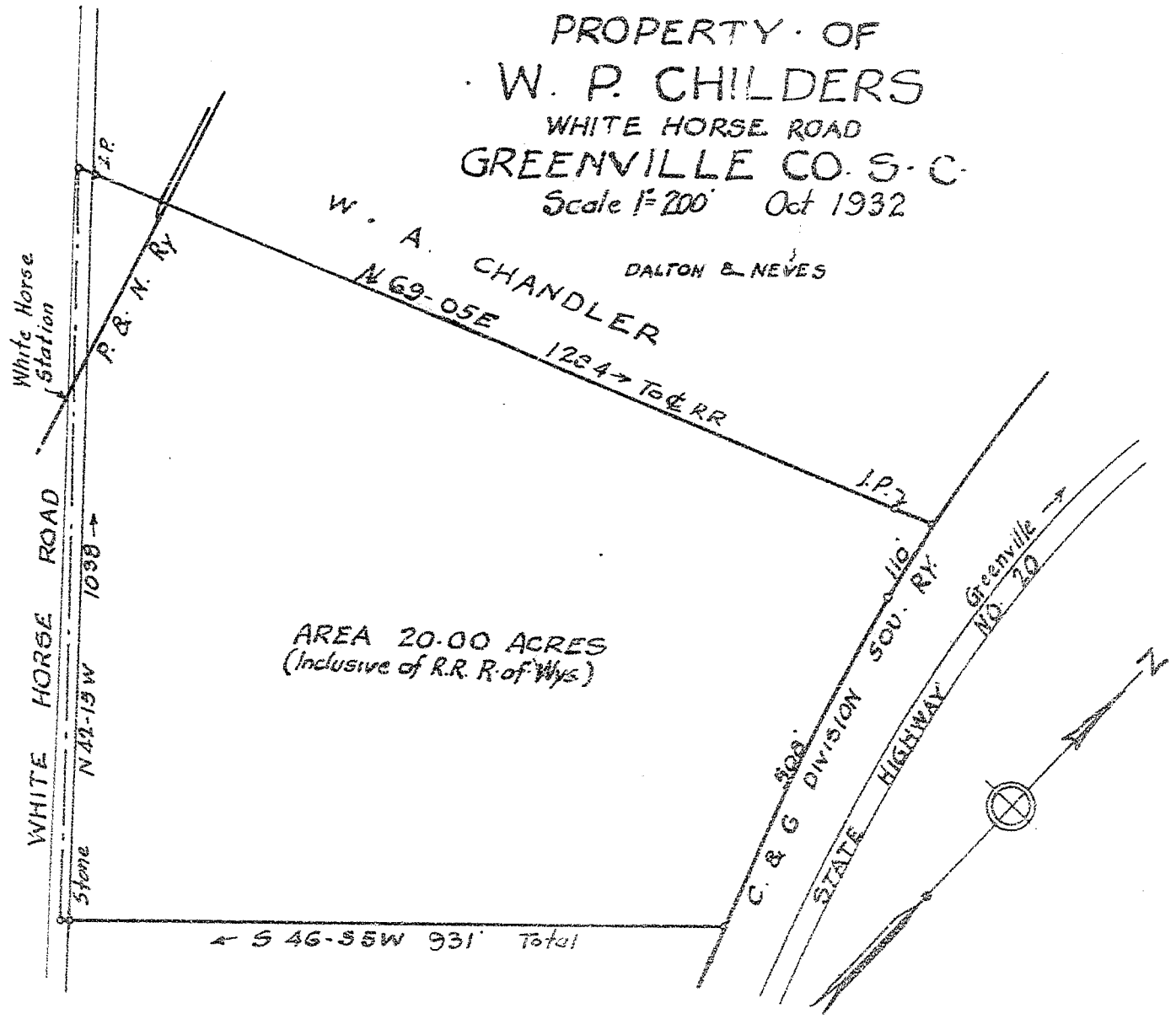


211

PROPERTY OF
W. P. CHILDERS
WHITE HORSE ROAD
GREENVILLE CO. S. C.
Scale 1"=200' Oct 1932

W. A. CHANDLER
DALTON B. NEVES
N 69-05E 1224' To & RR



AREA 20.00 ACRES
(Inclusive of R.R. R of Wys)

OCT 17 1932
#8494

FBK LL

Recorded Oct 17-1932 W.D.M.

